

GAMA SERIES™

Power Output Range

435Wp - 460Wp

Solar Cell Technology

PERC

Efficiency:

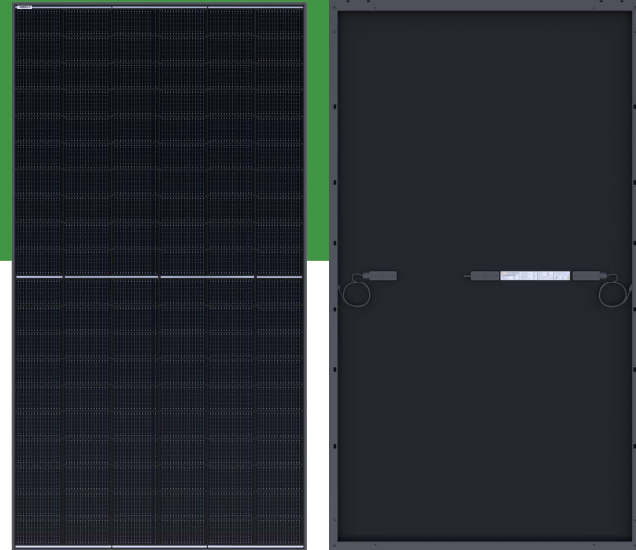
Up to 21.16% Module Efficiency
Power Tolerance 0~+5W

Durability:

25-year Performance
Warranty

Technology:

Perc cell technology
Mono-Monofacial / Single Glass



Product Code-BVM7610M-XXX-H-HC

PRODUCT FEATURES & BENEFITS



Design to Perform

- High energy yield and faster ROI
- High efficiency up to 21.16%
- Improved IAM and Low Irradiance performance
- Lower temperature coefficient



Build to Last

- Mechanical load up to +5400, -2400
- Anti-LeTID and PID performance
- Micro crack resistance
- Impact of inter-row resistance
- Improve current flow



Best Value

- Perc cell technology
- Lower Balance of system cost (BOS)
- Reduced levelized cost of energy (LCOE)

A RELIABLE, TRUSTED,
LONG-TERM INDUSTRY PARTNER



PRODUCT WARRANTY

Warranty Details

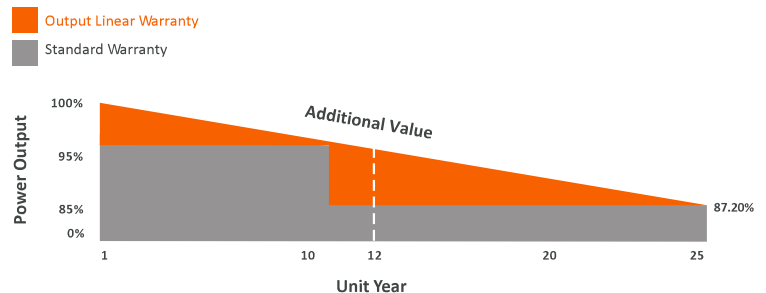
12 Year product warranty

25 Year linear product warranty

Power Degradation

First year power degradation no more than 2%

Subsequent annual power degradation no more than 0.45%



PRODUCT CERTIFICATIONS & TESTS

UL 61730 | IEC 61215 | IEC 61730 | CE Listed

IEC 62716, IEC 61701 Ammonia, Salt mist corrosion test

IEC TS 62804-1, IEC 60068-2-68PID test, Dust and Sand test

UL 61730 Fire Performance Type 1

Management System | Certificates

ISO 9001 | Quality management system

ISO 14001 | Environmental management system

ISO 45001 | Occupational health and safety management system

*Please contact Boviet Solar representative for a full list of certificates according to local requirements and PV module product type.

BloombergNEF

BNEF Tier 1
PV Module manufacturers
Since 2017

PVEL member of group **kiwa**

PVEL PV Module Reliability
Scorecard Top Performer
Since 2019



Supply Chain
Traceability Protocol



Environmental, Social, &
Corporate Governance Protocol



Made in USA
Since Q1 2025



Made in Vietnam
Since 2013

ELECTRICAL CHARACTERISTICS | STC

Maximum Power -Pmax (W)	435	440	445	450	455	460
Maximum Power Current -Imp (A)	12.53	12.60	12.67	12.73	12.79	12.85
Maximum Power Voltage -Vmp (V)	34.78	34.99	35.18	35.41	35.64	35.86
Short Circuit Current -Isc (A)	13.32	13.38	13.45	13.54	13.62	13.74
Open Circuit Voltage -Voc (V)	41.21	41.63	41.69	41.96	42.23	42.49
Module Efficiency	20.01%	20.24%	20.47%	20.70%	20.93%	21.16%
Power Tolerance (W)	0~+5	0~+5	0~+5	0~+5	0~+5	0~+5

STC: AM1.5 Irradiance 1000W/m², 25° C

ELECTRICAL CHARACTERISTICS | NOCT

Maximum Power -Pmax (W)	435	440	445	450	455	460
Maximum Power -Pmax (W)	329.52	333.36	337.03	340.84	344.67	348.43
Maximum Power Current -Imp (A)	10.16	10.22	10.28	10.33	10.37	10.42
Maximum Power Voltage -Vmp (V)	32.42	32.62	32.79	33.01	33.22	33.43
Short Circuit Current -Isc (A)	10.70	10.75	10.81	10.88	10.95	11.04
Open Circuit Voltage -Voc (V)	38.61	38.85	39.06	39.31	39.57	39.81

NOCT: AM 1.5 Irradiance 800W/m², 20° C, Wind speed 1m/s

MECHANICAL CHARACTERISTICS

Solar Cell	Monocrystalline I PERC PV Cells I Half-cut 10 Busbar I 120 (6 x 20) pcs in series
Solar Modules	Monofacial I 1917 x 1134 x 35mm (75.47 x 44.65 x 1.38 inch) Weight: 24 kg ± 5% (52.7 lb ± 5%)
Module Front Glass	3.2mm (0.126 inch) High transparency, low iron, AR Coated tempered Glass
Module Frame	Frame 35mm (1.38 inch) Anodized aluminum alloy frame
Module Junction Box	IP68 rated I 3 bypass diodes
Module Output Cable	4mm ² I Length: (+)1000mm (39.37 inch), (-)1000mm (39.37 inch)
Module Connector	JM608
Module Encapsulant	POE/EVA
Module Backsheet	Black color backsheet
Module Fire Type	Type 1 Fire rated

PACKING INFORMATION

Pieces per pallet:	31 pcs
Pallets per container (40HQ):	24 pallets
Pieces per container (40HQ):	744 pcs
Pallet Weight:	784 kg (1728.42 lb)
Pallet Dimension:	1942 x 1135 x 1257mm (76.46 x 44.69 x 49.49 inch)

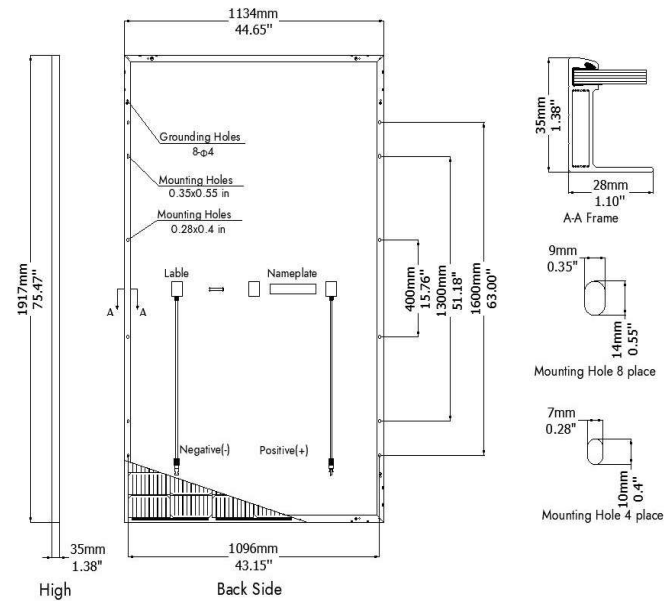
THERMAL CHARACTERISTICS

Pmax Temperature Coefficient	-0.35%/K
Voc Temperature Coefficient	-0.285%/K
Isc Temperature Coefficient	+0.05%/K
NOCT	113±35.6°F

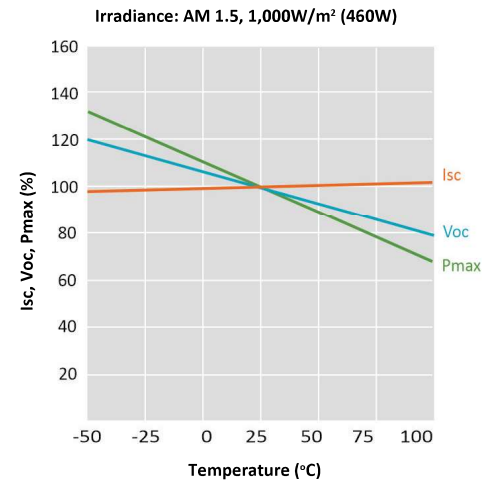
MAXIMUM RATING

Operating Temperature	-40°F~185°F
Maximum Series Fuse Rating	30A
Maximum System Voltage	1500V DC

PV Module: Mechanical Drawing



PV Module: Temperature Coefficient



PV Module: IV Curve

